



# Year 6 into 7 Parent Information Evening 2025

Ms. Smith:  
Headteacher



# Welcome to Glossopdale School & Sixth Form



*To aspire, endeavour and thrive together*

# Objectives

- To welcome you to Glossopdale School & Sixth Form
- To share with you our vision and values
- To provide information on how we will support your child as they transition from primary to secondary school





# In the blink of an eye!

Y6 Induction day 2019



Leavers Assembly June 2024



Glossopdale  
School & Sixth Form



The TRUE Learning  
Partnership

To as



# Year 11 Leavers June 2025



*To aspire, endeavour and thrive together*



# Our Values

We are...  
**Tenacious**   
*We don't give up easily and have a 'can do' attitude*

We are  
**Responsible**  
We are kind and caring towards others and value our community

We are...   
**Visionary**  
We are curious and thoughtful, we can think outside the box

We are .....  
**Hard Working**   
..... We try our best and aim high

We are .....  
**Independent** .....  
We are self-reliant and well-organised

We are...  
**EXCELLENT**   
We are committed to the highest standards in everything we do



To aspire, endeavour and thrive together



# Our Mission

**Glossopdale School and Sixth Form strives to be a model of true inclusivity and teamwork, with high expectations for all, underpinned by our THRIVE values. By 2028, excellence will be the norm.**



*To aspire, endeavour and thrive together*

# Our Mission

Our mission is collated into 3 areas:

- ★ Culture of community and pride
- ★ Culture of learning and achievement
- ★ Culture of support and opportunity



*To aspire, endeavour and thrive together*



# Community and Pride

*"In morning meetings, 'beliefs and values' lessons and assemblies, pupils study topics related to their personal development. They learn about respecting others and about the protected characteristics. Pupils contribute to the life of the school by becoming mental health champions. They attend careers fairs to consider their options when they leave school."*

**OFSTED 2023**



*'Pupils develop positive relationships with their teachers and feel safe and most pupils learn in calm classrooms'*

**Ofsted 2023**

# Learning and achievement



*The school's curriculum is ambitious and has been carefully designed. Students develop positive relationships with their teachers. They feel safe.*  
**OFSTED 2023**

*The school has high expectations for all pupils, including those with special educational needs and/or disabilities (SEND). The aim is that pupils 'thrive' and show tenacity, hard work, responsibility, independence, vision and excellence. Most pupils demonstrate these characteristics.*  
**Ofsted 2023**

*To aspire, endeavour and thrive together*





# Support and opportunity

*'Pupils benefit from a range of wider opportunities. They take part in football, netball and dance clubs. Over one hundred pupils are currently volunteering to raise money for a trip to Kenya where they will take part in community work. During the inspection, local primary schools visited to watch the school production of 'Frozen'. Pupils develop their leadership skills by taking part in the school council. They organise bake sales for charity. Sixth-form students support younger pupils in lessons and welcome visitors at school events.'* OFSTED 2023



*'Pupils said that they are not worried about bullying. They share concerns with staff and trust them to take effective action' OFSTED 2023*

*To aspire, endeavour and thrive together*



***Sue Gilbert***  
***Assistant Headteacher***  
***Year 7 Senior Lead***

**Parent, Child and School**  
**We work well together**

*To aspire, endeavour and thrive together*



# Our Year 7s: One Year Ago





# Student View - Student representatives

Please welcome Zoe who'd like to share her year 7 experience with us...

Year 8 student: James

And our Lead Student: Claire

*To aspire, endeavour and thrive together*

# Rewards and Student Leadership



Rewards:

THRIVE badges: 30 points

THRIVE + badges: 50 points

Star of the Week

Reward Assemblies

Reward Activities

Reward Store



Student Leadership:

Bronze, Silver, Gold, Platinum

Student Council, Prefects, Student Leaders



# Transition 2025: what have we done so far?

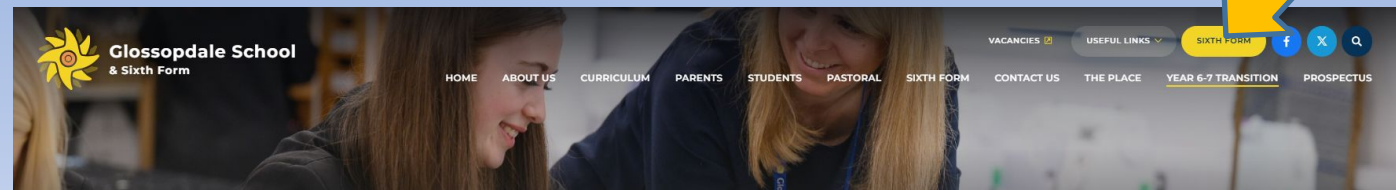
## What's to come?

- Meetings with all Y6 teachers/heads to share vital information about the children; data, friendships, character, support
- Transition clubs in many areas - from wellbeing to sport, catering to design technology, the biggest variety of clubs we have ever offered - over 160 children are attending at least one of these
- New Parent Handbook
- New and updated 'Year 6 - 7 Transition' area on our website that has:
  - Parent guides on how to support your child with their transition
  - Parent information film presentation

*To aspire, endeavour and thrive together*

### Still to come:

- Induction day - Friday 4th July



# Support Structure - Year 7

## Tutors

Head of Year – Mrs J Thornton

Dedicated Year Managers – Mrs E Quinn and Mrs N Dewey

School SENDCO - Mrs L Barnfather  
Asst SENDCO - Mrs M Johnston



Deputy Headteacher - Inclusion - Mr P Stirling  
Asst Headteacher - Culture, Belonging & Rewards - Mrs F Flaherty

# Mrs Thornton - Head of Year

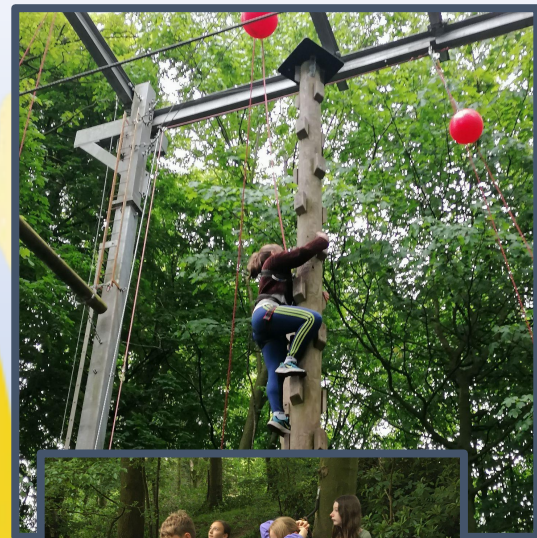
## Mrs Quinn and Mrs Dewey - Year Managers



In April 2026, we are offering all Year 7s the chance to join a two night residential trip to the brand new Newby Wiske PGL centre in Yorkshire

*To aspire, endeavour and thrive together*





- 2 nights at a fantastic outdoor education centre
- Excellent opportunity to forge new friendships and make new memories

**Letters will be e-mailed at the beginning of term in September and deposit payments can be made by ParentPay.**



# Parent Handbook

This contains all the information you need about life at Glossopdale School and Sixth Form. From uniform to homework, ParentPay and lunches to lockers.

## Year 7 Parent Handbook 2025/2026

Glossopdale  
School & Sixth Form

### Uniform

**Uniform for School**

- Black school blazer with school logo (Students must wear their blazer around school at all times. They may remove their blazer during lessons only with the permission of the teacher.)
- White Shirt (shirts not blouses) - short or long sleeved. Shirts must be long enough to be tucked in at all times
- School tie - year specific colour (Year 7 is orange with blue stripes)
- Regulation black tailored black trousers, neither skinny, tight nor baggy, nor excessively flared, not denim, brushed denim or canvas fabric
- Tailored black school skirt - knee length, not too short, with at least one pleat
- Optional black logo jumper - this must be worn under and in addition to the blazer
- In warm weather shorts may be worn - black, tailored, medium length/on the knee shorts; they must be plain, not sports, jersey or tight shorts and with no logos
- Suitable and sensible leather/leather look black shoes or Black Nike Air Force One Trainers, permitted. Socks must not be above knee level. Shoes must not contain white, coloured logos or Nike silver shoe lace adornment
- Plain black ankle socks or black opaque tights
- School bag fit for purpose

**Uniform for PE**

Students are expected to change for PE lessons, again this can be purchased at a number of retailers including Bulldog Fashion in Glossop. The PE uniform consists of:

- Black polo shirt with school logo
- Black shorts with school logo (optional)
- Black tight-fitting shorts, e.g. cycling shorts, if knee length (optional) not 'hot pants'
- Black football socks or plain white sports socks
- Black hoodie with school logo (optional)
- Black, plain, jogging pants/leggings (optional)
- Black shower proof jacket (optional)
- Indoor sensible sports shoes
- Outdoor sensible sports shoes

We want students to grow into healthy adults. We believe that it is dangerous for students to wear shoes that have platform soles or high heels. For reasons of health and safety we do not allow them to be worn in our school. Neither do we allow students to wear trainers to school. Whilst appropriate for sport and leisurewear, this footwear is not in keeping with the smart appearance of a school uniform. We require all students to wear shoes as stated in the uniform list.

Jeans, leggings, tracksuits, hooded tops, open toe shoes, sandals or high heels are not allowed and boots are only allowed in extreme weather conditions.

Jewellery- one pair of plain studs (not sleepers) and a watch is permitted. Earrings are not allowed in tops of ears and other visible body piercing is not allowed.

Makeup, nail varnish or extreme hair styles/non-natural colours e.g. pink are not allowed, including dip dyes. Hair should not be styled with tramlines, sculpting or shaving. False nails or eyelashes, nail extensions and nail polish are not permitted.

### School Information System

**Accessing Your Child's School Information with MyChildAtSchool (MCAS)**

Our school uses Bromcom, a secure and comprehensive school information system, to manage student data and communication. As a parent or carer, you can stay informed and engaged with your child's education through the MyChildAtSchool (MCAS) App.

**What is MyChildAtSchool?** MyChildAtSchool (MCAS) App.

**How to Get Access:** To use the MCAS app, you must be listed as a student contact in our school system. You must be registered as a parent or carer on our Bromcom system. A valid email address must be recorded for you in our records. Once this information is in place, you will receive an invitation email with instructions on how to set up your MCAS account. If you haven't received your login details or need assistance accessing the app, please contact us on [info@glossopdaleschool.org.uk](mailto:info@glossopdaleschool.org.uk)

**my child at school**

**Equipment**

In line with our whole school expectations, all students are expected to have the following equipment every day:

- Pens (a supply of blue/black and at least one red).
- Pencil
- Ruler
- Calculator
- Reading book
- Personal Development (PD) folder/book
- Any equipment required for specialist lessons including PE Kit.

Students will be sanctioned if they do not have the correct equipment in every lesson.

### Lunches, Snacks & How to Pay

Year groups share their lunchtimes and Year 7 will have a dedicated seating area that they can use if they wish.

Charnwells manage the catering at school, their menus and prices lists can be found on our website: [www.glossopdaleschool.org.uk](http://www.glossopdaleschool.org.uk) (Students > Lunch Menu)

Please encourage your child to eat as healthily as possible. Our canteen offers a range of healthy, seasonal meals. Chips are only available once a week and have to be purchased as part of a meal. Students cannot bring unhealthy snacks into school and fizzy drinks, drinks cans, energy drinks, sweets, lollipops and all other sugary snacks and drinks are not permitted. Please be aware that any student carrying these will have them confiscated by a member of staff.

Students who have packed lunches eat their lunches at the same time as students who have school dinners.

Water is available to buy in bottles. Students are encouraged to bring a bottle of water to school with them - please bring water in a sports/screw top bottle. Bottles can be filled using the water fountain in the Heart and near the Sports Hall.

Students are not allowed to leave the site at lunchtimes unless permission is given by parents for an appointment. Students are not allowed to leave the site to buy food elsewhere.

Glossopdale  
School & Sixth Form





# Induction Day - Friday 4th July

- The school day will start at **9.15am** for Y6s. Please do not send them into school until 9.00am: at the earliest
- The children will be in their tutor groups for the day - these are not necessarily their learning groups for September
- Wear Primary School uniform (leavers' hoodies are fine), bring a school bag and equipment and wear trainers (in case of PE lessons)
- Food: toast will be provided at break and a 'meal deal' for lunch (free of charge) - or students can bring their own packed lunch. Please send the children with a drink/water bottle (they will not be able to purchase anything on the day)
- School day will finish at 3.15pm
- Parents - please do not enter the school grounds in your cars: encourage the children to be independent and walk if possible

*To aspire, endeavour and thrive together*

# What you can do now to help your child prepare ?

1. Visit our website together and read our school Facebook posts, too.



2. Talk about your own positive experiences of secondary school – you survived!



3. Have a practise walk to school using the route they will take & invite the friends they'll be walking with.



4. Practise packing their school bag with all the correct equipment. Have fun buying some new stuff !



5. Read together & discuss the story. All year 7s are expected to read regularly – don't get out of the habit.



*To aspire, endeavour and thrive together*

**Glossopdale**  
School & Sixth Form



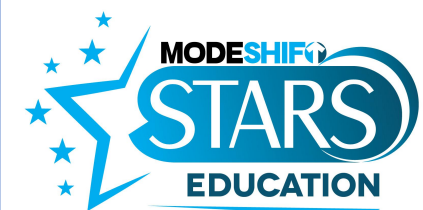
  
The TRUE Learning  
Partnership





## Getting Here

- Helps pupils be independent
- Enjoy travel to school
- Saves time and money – one less journey by car
- Practise - dress rehearsal/time it (school starts at 8:40)!



APPROVED TRAVEL PLAN 2025



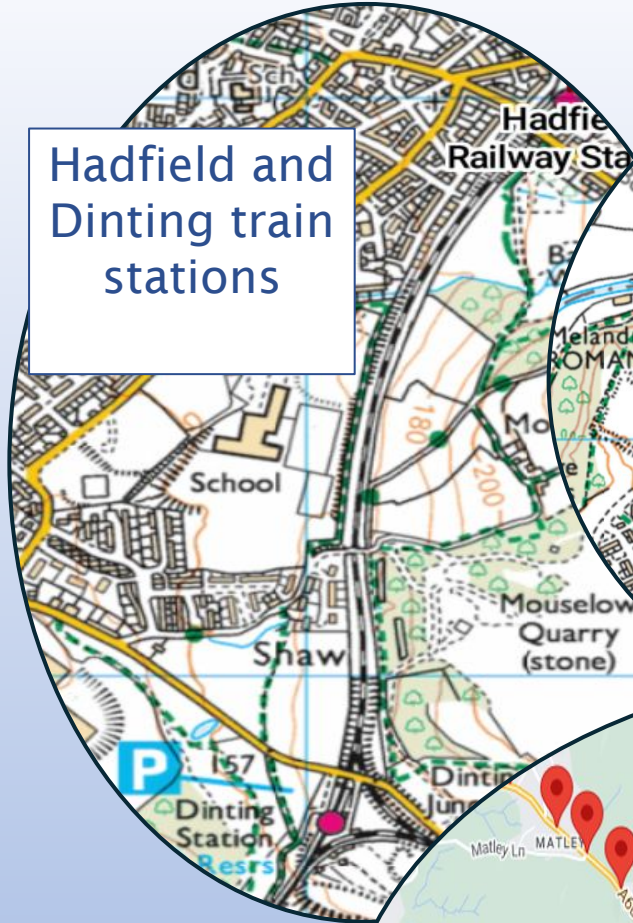
# The route



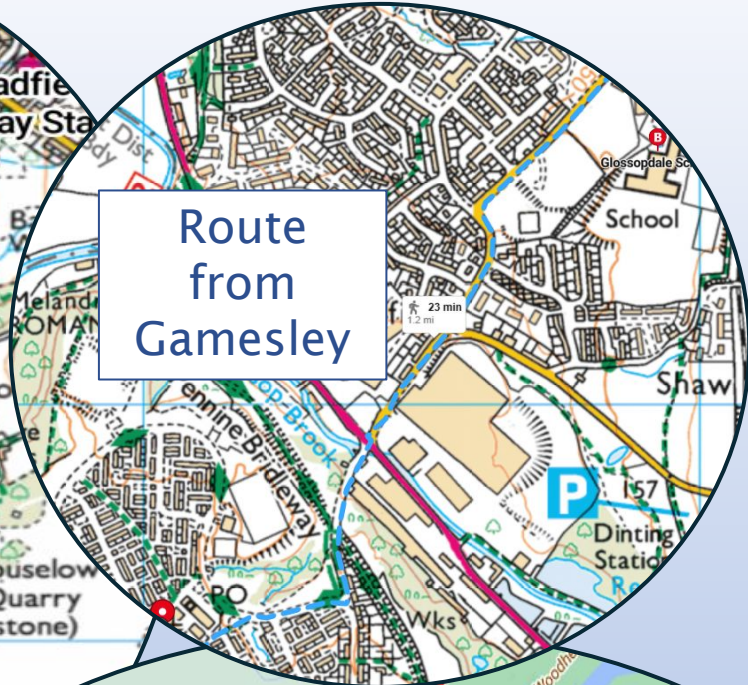
[www.glossopdaleschool.org.uk](http://www.glossopdaleschool.org.uk)

Parents  
Getting here

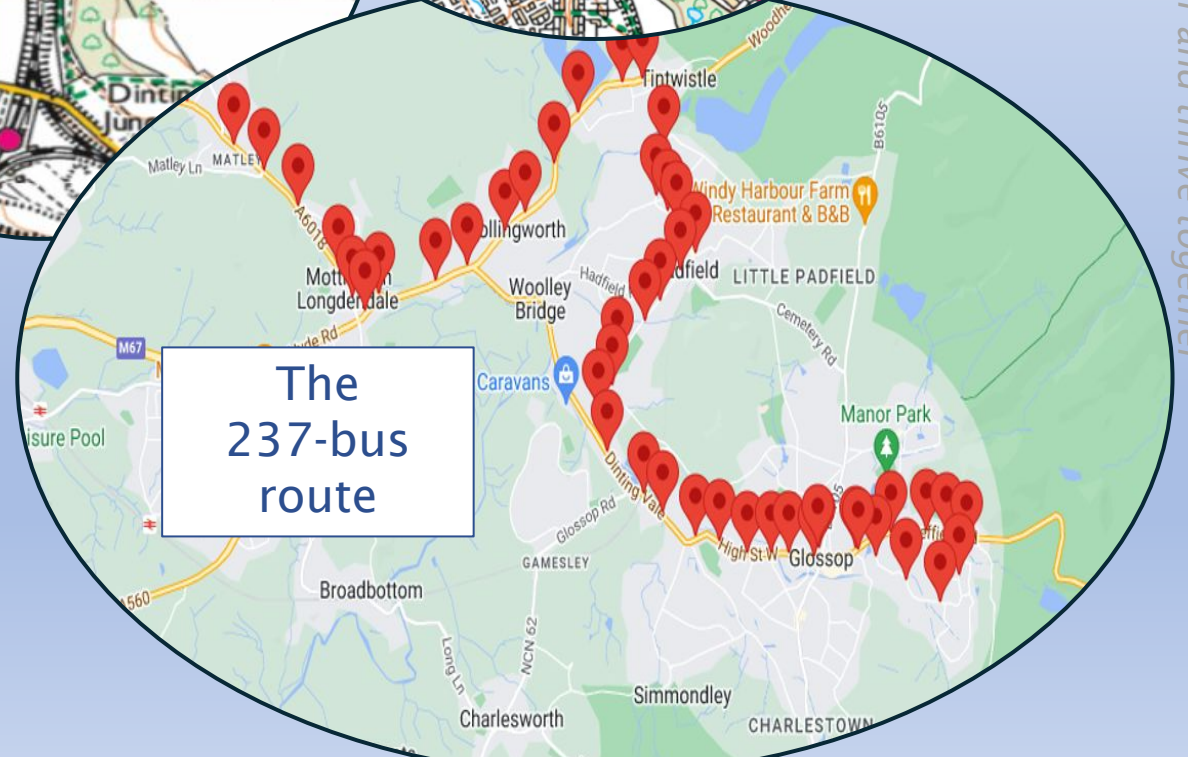
Hadfield and  
Dinting train  
stations



Route  
from  
Gamesley



The  
237-bus  
route







Mental Health Support Service for children and young people in  
Derby and Derbyshire

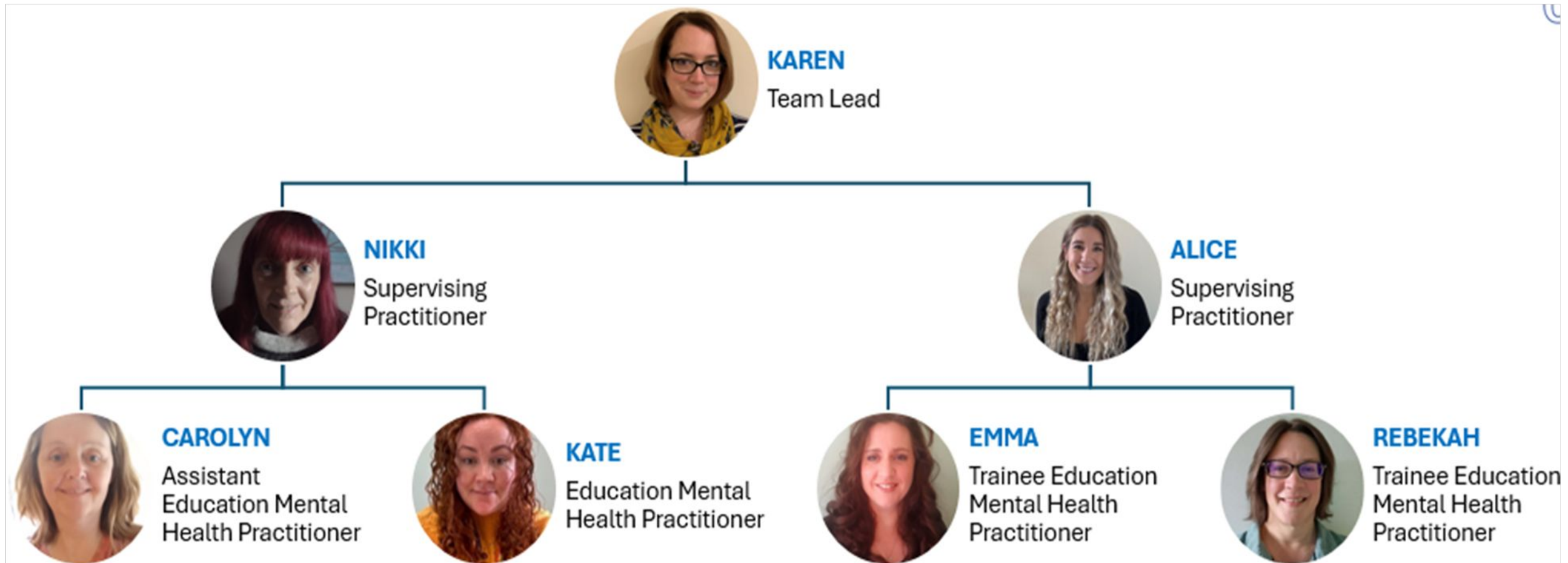
# What is a MHST?



- An early intervention and prevention service to improve mental health and emotional wellbeing for children and young people (CYP)
- To help them manage their feelings, behaviours, thoughts and physical sensations so they can better engage with their learning and education
- Also working alongside and supporting school staff, parents and other professionals



# Meet the Glossop Team

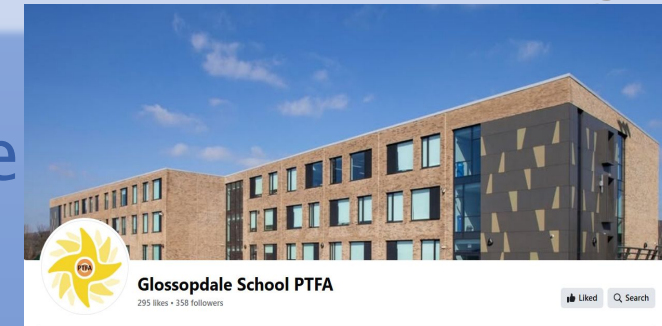


# Any queries relating to transition?

Please e-mail [info@glossopdaleschool.org.uk](mailto:info@glossopdaleschool.org.uk) and allow up to 48 hours for a reply

There are no silly questions, we want your child (and yourself!) to feel as comfortable, confident and happy as possible as you join our Glossopdale School family

- Our PFTA are a friendly group who would welcome new members and any support parents can offer with fundraising. Please see their Facebook
- Y6 Parents are now receiving our weekly parent bulletin as well as your 'Moving Up' newsletter
- Follow us on Facebook/Instagram



To aspire, ende

together



# Parent Partnership

Education is a shared commitment between dedicated teachers, motivated students and enthusiastic parents with high expectations.

*Bob Beauprez*

No school can work well for children if parents and teachers do not act in partnership on behalf of the children's best interests

— *Dorothy H Cohen* —

Please make your way to the classrooms for a smaller meeting hosted by our senior staff. Select the room which corresponds with the colour of the card you were given on arrival.

Thank you

